

NHSSCOTLAND PROJECT FACT FILE

Health Facility Project Name	Midlothian Community Hospital
Location	Midlothian Community Hospital 70 Eskbank Road Bonnyrigg Dalkeith EH22 3ND
Population served	85,000. Midlothian and part East Lothian communities
Type of healthcare facility	Community hospital
Type of construction	New build
Construction start date (estimated or actual)	19 March 2009
Construction completion date	9 August 2010
Gross floor area (m²)	7006m ²

Project design and construction cost	<p>Land - £749,815 (incl VAT purchased on the 27/2/2007).</p> <p>Approximate legal etc purchase fees - £82,974 (incl VAT)</p> <p>Construction - £16,037,706 (excl VAT)</p> <p>Design fees (PFI contractor) - £1,056,285 (excl VAT)</p> <p>Inflation - £1,060,100 (excl VAT)</p> <p>Total - £18,171,000 (excl VAT)</p>
Cost per m²	£2,549 m ² (This cost is representative of construction costs and is inclusive of design fees and inflation but exclusive of VAT)
Total number of beds	<p>The community hospital provides 88 beds, with a total of 80 single bedrooms, each with full ensuite facilities (incl of shower, WC and WHB).</p> <p>40 frail elderly continuing care beds and 48 frail elderly mental health beds.</p> <p>These include 24 assessment beds for older people with mental health problems and 24 continuing care beds for older people with mental health problems.</p>
Departmental information	<p>Frail elderly continuing care beds and frail elderly mental health beds, including assessment beds and continuing care beds for older people with mental health problems.</p> <p>Also includes a day hospital for older people with mental health problems, a dedicated physiotherapy and occupational therapy service, an out-patient department, including x-ray service, child health clinics, and a range of other health services. Lothian's GP Out-of-Hours service (Lothian Unscheduled Care Service).</p>
Client owner	<p>NHS Lothian</p> <p>http://www.nhslothian.scot.nhs.uk/GoingToHospital/Locations/MLCH/</p>
Project Manager/key contact	<p>Andrew MacDonald</p> <p>Andrew.Macdonald@nhslothian.scot.nhs.uk</p>
Capital route procurement	PFI
Project Management	<p>Capital Planning and Projects, NHS Lothian</p> <p>Project Manager – Andrew Macdonald</p> <p>Andrew.Macdonald@nhslothian.scot.nhs.uk</p>

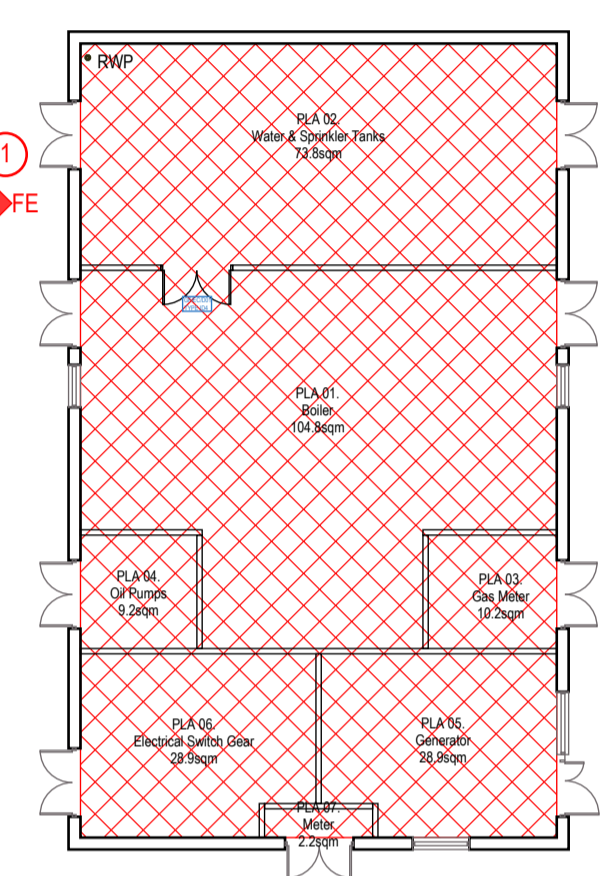
Architects	HLM Architects (through PFI contractor) Ailsa Court 121 West Regent Street Glasgow G2 2SD
Contractors	Robertson Capital Projects Robertson House Castle business Park Stirling KK9 4TZ
Services	<p>The new community hospital will act as a local community resource centre and provide a bridge between home and specialist hospital care, through the delivery of both ambulatory and / or inpatient services closer to communities.</p> <ul style="list-style-type: none"> • Older people (Mental Health) 24 Assessment and 24 continuity care beds • Older people (Mental Health) 20 places day hospital (5 days) • Older people (Physical Health) 40 beds • Out reach clinic facilities • Unscheduled Care Services (6.00 pm to 12.00 pm, weekends, including minor injuries) • Multi-Disciplinary Child Community Health Clinics • Imaging (plain film X-ray + ultrasound / ECG) • Peripatetic AHP Base • Occupational Therapy Treatment Base (multi-use) • Physiotherapy Treatment Base (multi-use)
Key facts	



LEGEND

- 60 MINUTE COMPARTMENT WALL
- - - 30 MINUTE SUB COMPARTMENT WALL
- 30 MINUTE WALL (AROUND HAZZARD ROOMS)
- HAZZARD ROOM
- 60 MINUTE ROOF PROTECTION (MINIMUM 3M) CONCRETE SLAB
- 60 MINUTE ROOF PROTECTION (MINIMUM 3M) A(22)102 DETAIL
- 60 MINUTE FIRE RATED CAPPING TO STAIRWELLS HORIZONTAL SHAFTWALL A(35)101
- HAZARD DEPARTMENT
- SERVICE RISER
- ↖ FE FINAL EXIT
- ↖ 60 MINUTE FIRE DOOR
- ↖ 30 MINUTE FIRE DOOR
- - - FIRE CURTAIN
- FIRE EXTINGUISHER LOCATIONS

- ① manual panic bar lock & bolt lock fitted to door
 - ② magnetic lock with push button exit please refer to DSSR drawing G1648T G(68.1100-001) Ground Floor Access Control for details
 - ③ Automatic opening doors
- NOTE:
 ALL DOUBLE DOORS ACROSS CORRIDORS WILL HAVE A MINIMUM CLEAR OPENING WIDTH OF 1500MM FOR MATTRESS EVACUATION



RECORD ISSUE

This issue records the latest revision of this drawing as prepared for construction purposes for architectural information only, amended relying upon information provided to HLM Architects by: ROBERTSON CONSTRUCTION LOTHIAN LIMITED. HLM Architects have had no inspection duties in this respect and cannot confirm the project was constructed entirely as shown and accept no liability for losses arising from any errors in, or omissions from the information provided. For areas and sizes, dimensions shown for construction should be checked on site. For alterations, this drawing must be read in conjunction with the Health and Safety File, and the drawings of other consultants and specialists, and details checked on site prior to commencement.

Issue No.	Description	Date	Author
R1	Record Issue	09/06/10	JL
C4	Fire extinguisher locations in circulation space and 21/01/10 open plan areas added to drawing		JL
C3	Amended in line with Fire Engineer's report	09/11/09	JL
C2	Updated in line with fire engineers comments. Method of securing escape doors added	02/11/09	JL
C1	Construction Issue	07/08/09	JL
P4	Issued for Review	08/06/09	SA
P3	Treatment rooms in PAA & PCC wards and dirty utility in imaging changes to hazard rooms	24/11/08	JL
P2	Compliant Issue	12/09/08	JL
P1	PRELIMINARY ISSUE	25/07/08	JL

Revisions

Project
MIDLOTHIAN COMMUNITY HOSPITAL

Client
ROBERTSON CONSTRUCTION

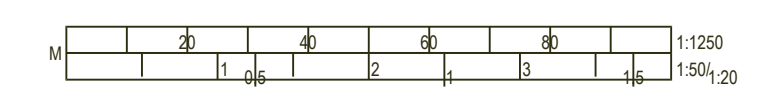
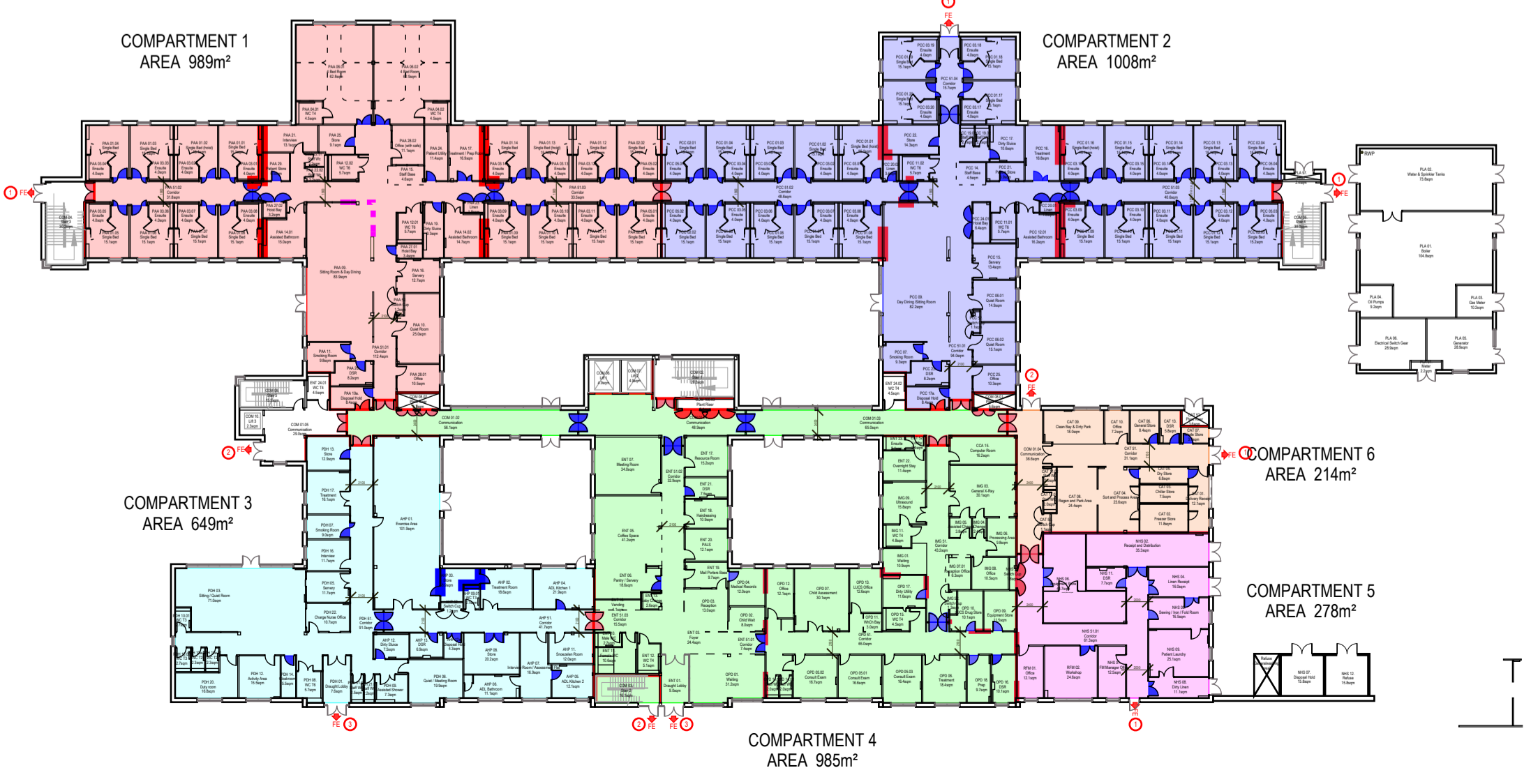
Title
GROUND FLOOR FIRE STRATEGY

Drawing No.	Revision
L(00)07	R1
Scale @ A1	Drawn
1:200	JD
Date	Checked
03/10/2007	SA



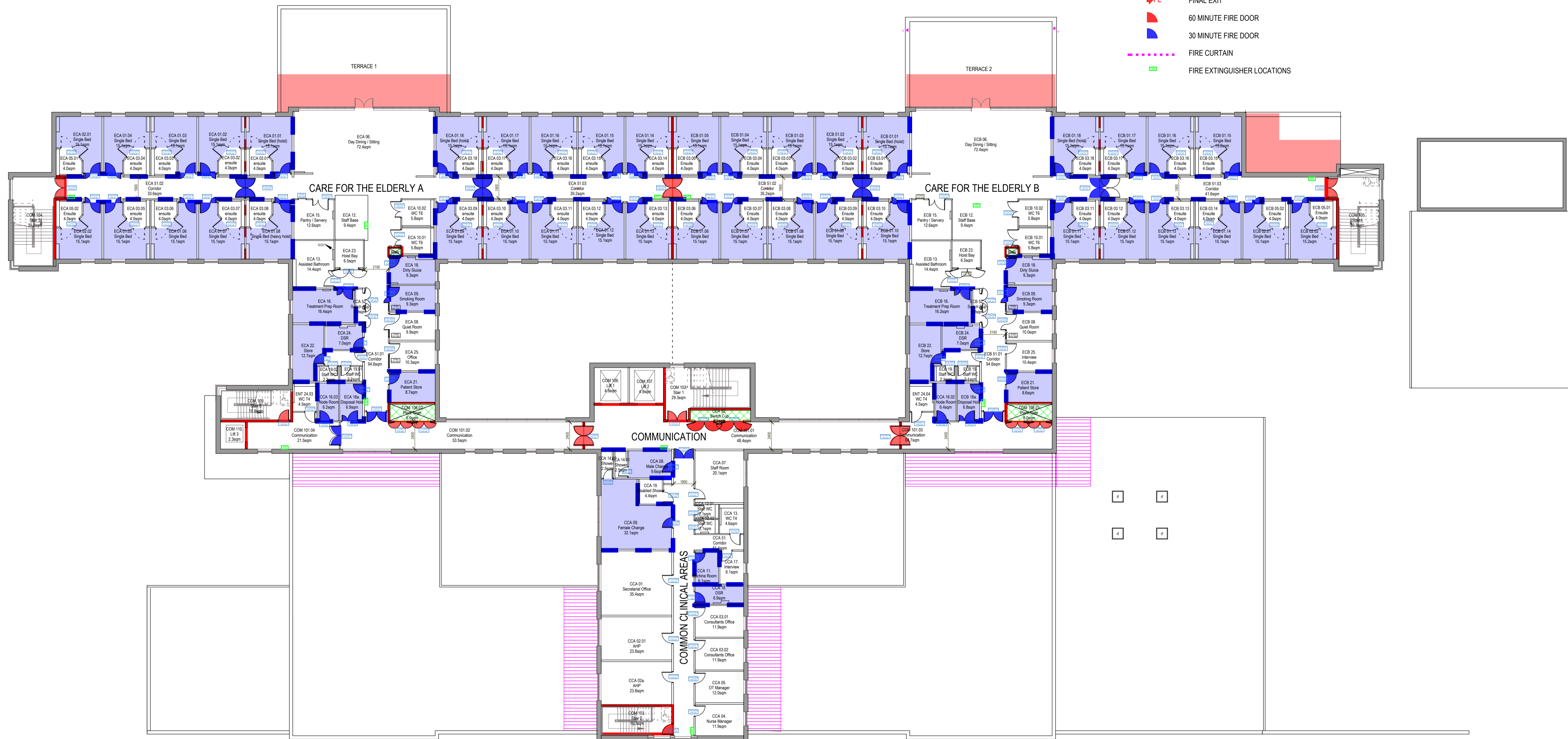
2nd Floor Ailsa Court 121 West Regent Street GLASGOW G2 2SD
 t: 0141 226 8320 f: 0141 226 8350

LONDON GUILDFORD SHEFFIELD GLASGOW BELFAST CARDIFF PLYMOUTH



- LEGEND**
- 60 MINUTE COMPARTMENT WALL
 - 30 MINUTE SUB COMPARTMENT WALL
 - 30 MINUTE WALL (AROUND HAZZARD ROOMS)
 - HAZZARD ROOM
 - 60 MINUTE ROOF PROTECTION (MINIMUM 3M) CONCRETE SLAB
 - 60 MINUTE ROOF PROTECTION (MINIMUM 3M) A(22)102 DETAIL
 - 60 MINUTE FIRE RATED CAPPING TO STAIRWELLS HORIZONTAL SHAFTWALL A(35)101
 - HAZARD DEPARTMENT
 - SERVICE RISER
 - FE FINAL EXIT
 - 60 MINUTE FIRE DOOR
 - 30 MINUTE FIRE DOOR
 - FIRE CURTAIN
 - FIRE EXTINGUISHER LOCATIONS

NOTE:
 ALL DOUBLE DOORS ACROSS CORRIDORS WILL HAVE A MINIMUM CLEAR OPENING WIDTH OF 1500MM FOR MATTRESS EVACUATION



RECORD ISSUE

This issue records the latest revision of this drawing as prepared for construction purposes for architectural information only, amended relying upon information provided to HLM Architects by: ROBERTSON CONSTRUCTION LOTHIAN LIMITED. HLM Architects have had no inspection duties in this respect and cannot confirm the project was constructed entirely as shown and accept no liability for losses arising from any errors in, or omissions from the information provided. For areas and sizes, dimensions shown for construction should be checked on site. For alterations, this drawing must be read in conjunction with the Health and Safety File, and the drawings of other consultants and specialists, and details checked on site prior to commencement.

R1	Record Issue	09/06/10	JL
C3	Fire extinguisher locations in circulation space and 21/01/10 open plan areas added to drawing	21/01/10	JL
C2	Amended in line with Fire Engineer's report	09/11/09	JL
C1	Updated in line with fire engineers comments	02/11/09	JL
P5	Areas of Shaftwall Fire Protection indicated - required to protect steelwork within ceiling void.	22/06/09	SA
P4	Issued for Review	08/06/09	SA
P3	Treatment /prep rooms to be hazard rooms	24/11/08	JL
P2	Compliant Issue	12/09/08	JL
P1	PRELIMINARY ISSUE	25/07/08	JL

Revisions

Project
MIDLOTHIAN COMMUNITY HOSPITAL

Client
ROBERTSON CONSTRUCTION

Title
FIRST FLOOR FIRE STRATEGY

Drawing No.	Revision
L(00)08	R1
Scale @ A1	Drawn
1:200	JD
Date	Checked
03/10/2007	SA

