

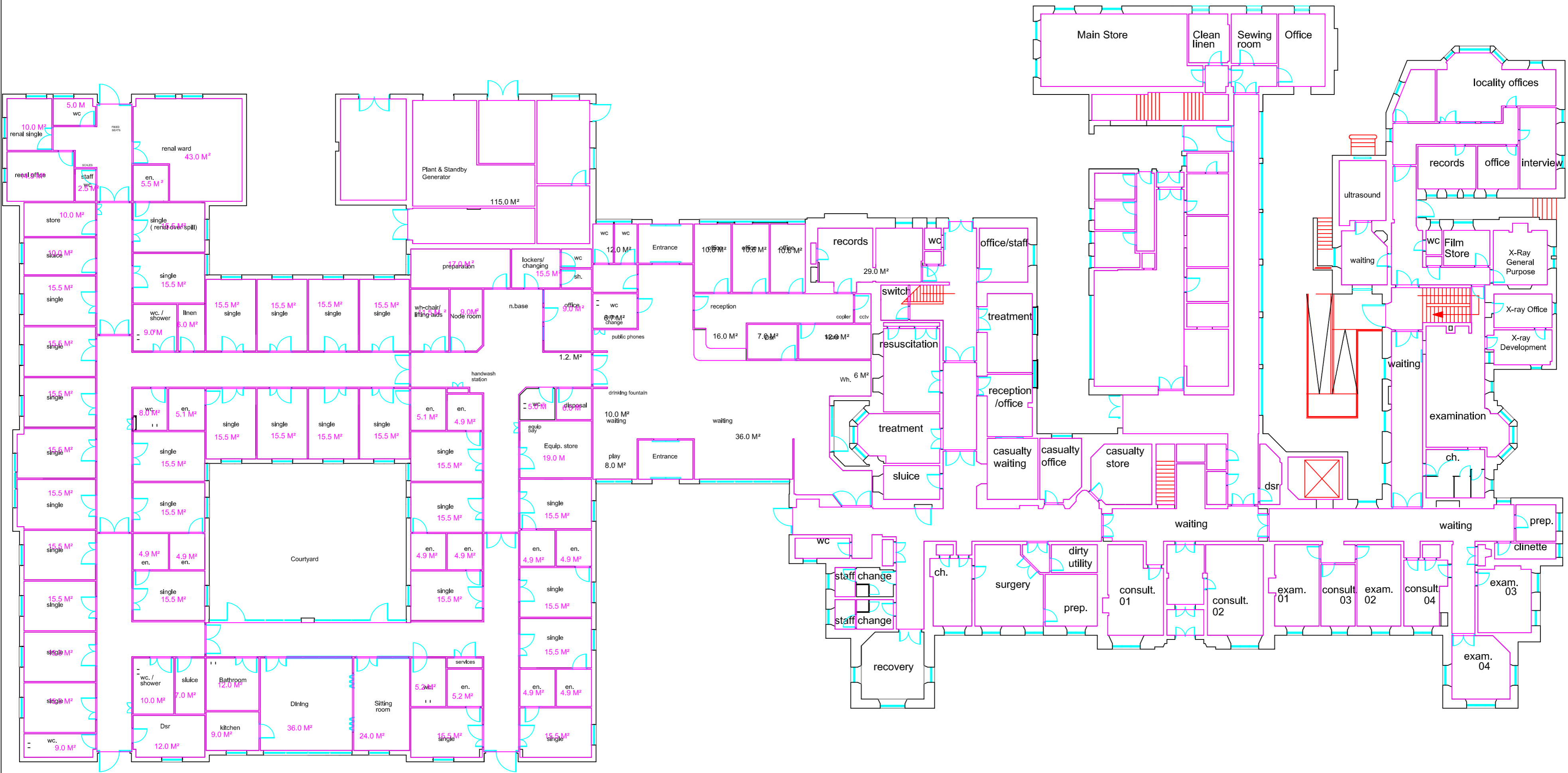
NHSSCOTLAND PROJECT FACT FILE

Health Facility Project Name	Chalmers Hospital and Health Centre
Location	Chalmers Hospital, Clunie Street, Banff. AB45 1HY
Population served	Hospital – 20,386 (Banff and Buchan area) Health Centre – 9,434 (Practices Population)
Type of healthcare facility	Community Hospital
Type of construction	New Build Health Centre and refurbishment of existing Hospital
Construction start date (estimated or actual)	13 th October 2008 Actual
Construction completion date	28 th October 2011 Actual
Gross floor area (m²)	
Project, design and construction cost	£14,418,216
Cost per m²	
Total bed numbers	23 beds, 100% single room accommodation
Departmental information	<p>This hospital refurbishment and provision of a new health centre on an existing operational site was carried out in various stages, and is summarised below:</p> <p>Phase A - Refurbishment the Old Hospital including Ultrasound, Admin/Reception, Outpatientsg consulting & examination rooms, Speech Therapy, Temporary Casualty, X-Ray, Locality Offices, Birthing Suite, Physiotherapy, Stores and the basement plant area and demolition of the old Maternity/Outpatients Building and a house.</p> <p>Phase B – Build new Health Centre</p> <p>Phase C – Demolish existing health centre (attached to old hospital) and build a new 30 bed acute ward and renal unit on the old health centre site.</p>

	<p>Phase D – Refurbish for provision/relocation of Physiotherapy, Speech Therapy, Outpatients and Casualty.</p> <p>Within this project, because of limited space and the need to maintain operational services, there were several double moves, and phases within phases.</p>
Client/owner	<p>NHS Grampian</p> <p>http://www.nhsgrampian.org</p>
Project Manager/Key contact(s)	<p>Christine Coutts Project Manager Tel 01224 550627 & Mobile 07876 258771 christine.coutts@nhs.net</p>
Capital procurement route	<p>Public Capital</p>
Project management	<p>Christine Coutts Project Manager,</p> <p>Tel 01224 550627 & Mobile 07876 258771 christine.coutts@nhs.net</p>
Architects	<p>Mackie Ramsay & Taylor</p>
Contractor	<p>Robertson Construction (Northern Limited)</p>
Services	
Key facts	

**CHALMERS HOSPITAL AND BANFF HEALTH CENTRE
NEW DEVELOPMENT LAYOUT**



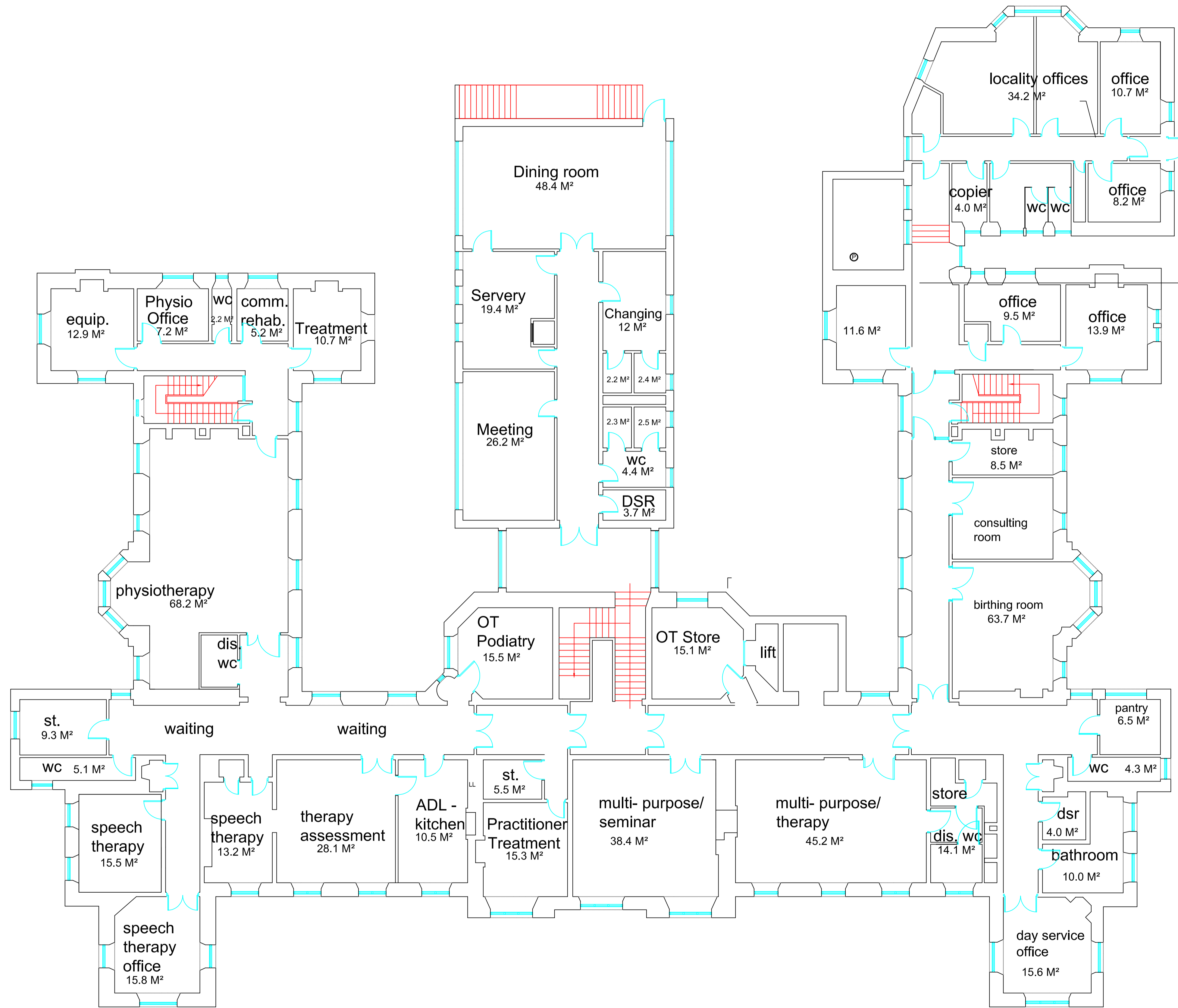


NHS Grampian
National Health Service
Physical Planning Team
Summerfield House
2 Eday Road
Aberdeen AB15 6RE
Tel: 01224 558620
Fax: 01224 558686

Location/Site:
**Chalmers Hospital
Banff**

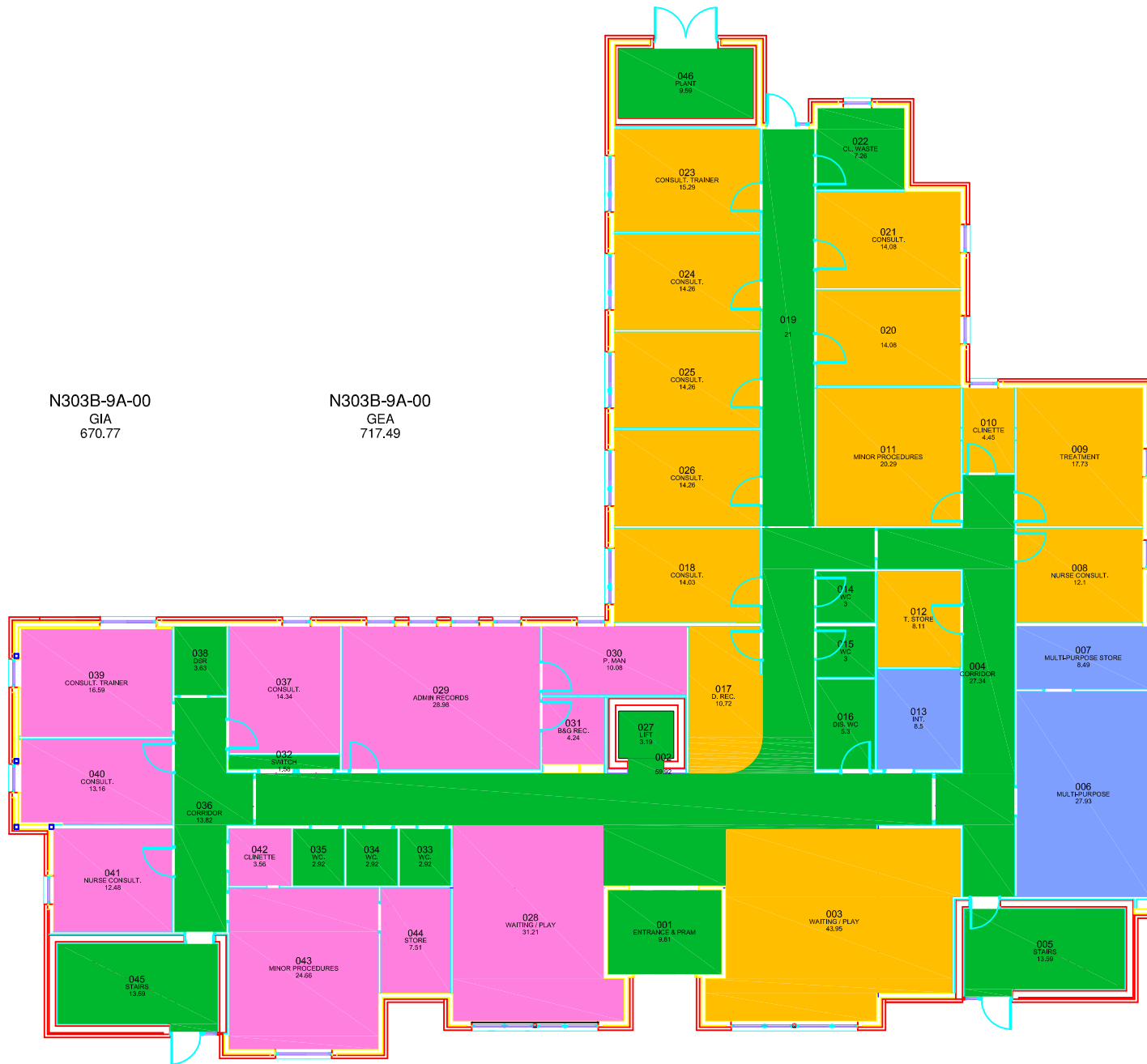
Drawing Title:
Ground Floor Plan

Drawing No:	n/a
Drawn By:	n/a
Scale:	1:200
Checked By:	n/a
Date:	JUNE 2012



Notes / Revisions / Keys / Legends

- BANFF & GAMRIE / CHP SHARED
- COMMON
- DEVERON DEDICATED
- SHARED



N303B-9A-00
GIA
670.77

N303B-9A-00
GEA
717.49

NHS Grampian
National Health Service
Physical Planning Team
Summerfield House
2 Eday Road
Aberdeen AB15 6RE
Tel: 01224 558620
Fax: 01224 558686

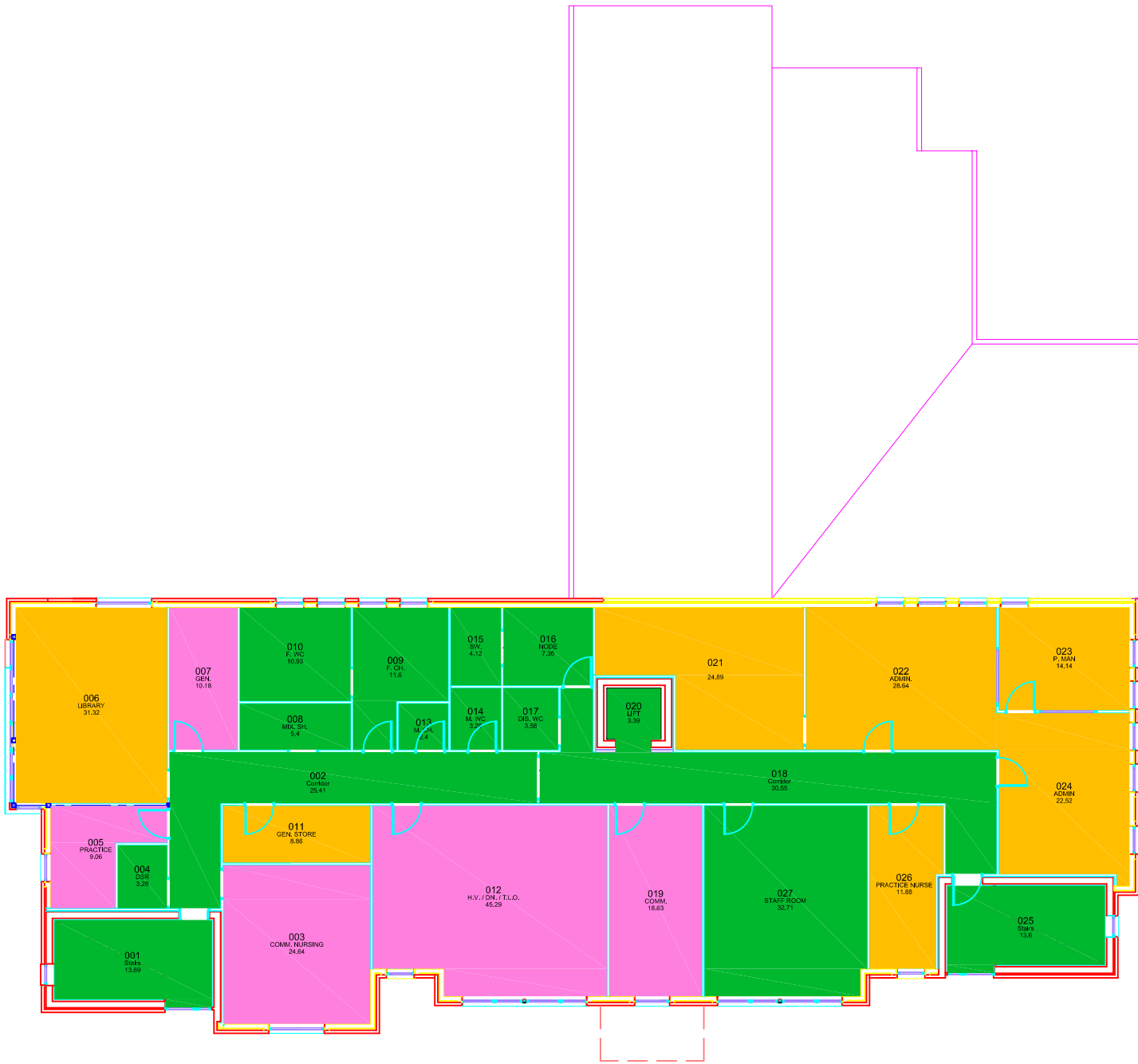
Location/Site:
BANFF HEALTH CENTRE

Drawing Title:
Ground Floor Plan

Drawing No:	n/a		
Drawn By:	n/a	Scale:	1:200
Checked By:	n/a	Date:	Aug '11

Notes / Revisions / Keys / Legends

- BANFF & GAMRIE/
CHP SHARED
- COMMON
- DEVERON DEDICATED



N303B-9A-01
GEA
476.96

N303B-9A-01
GIA
444.98

NHS Grampian
National Health Service
Physical Planning Team
Summerfield House
2 Eday Road
Aberdeen AB15 6RE
Tel: 01224 558620
Fax: 01224 558686

Location/Site:
BANFF HEALTH CENTRE

Drawing Title:
First Floor Plan

Drawing No:	n/a	
Drawn By:	n/a	Scale: 1:200
Checked By:	n/a	Date: Aug '11